



TOWN OF MOSEL * SPRING 2012 NEWSLETTER

W982 County Road FF, Sheboygan, WI 53083

Phone: 920-565-3700 Fax: 920-565-2677

e-mail: townofmosel@wi.rr.com Website: townofmosel.com

CHAIR

Dirk Zylman 565-3894
moselchair@wi.rr.com

SUPERVISORS

Wayne Warnecke 565-2562
moselsuper1@wi.rr.com

Aaron Anger 565-2292
moselsuper2@wi.rr.com

CLERK-TREASURER

Rachel Rehbein - 565-3700
townofmosel@wi.rr.com

CONSTABLE

Mike Langland - 565-3881
moselconstable@wi.rr.com

ASSESSOR

Associated Appraisal
Consultants, Inc.
1-800-721-4157

PLANNING & ZONING COMMISSION

Al Loth-Chair,
Barb Bitter, Cathi Kanouse,
Ralph Mayer,
Ron Vandoske,
Randy Rautmann,
Joel Kaeppler

BOARD OF APPEALS

Dennis Mueller-Chair,
Jim Eichmann, Alan Harms,
Bill Ochs, Dan Voss,
Stacy Grunwald (1st Alt.)
Nathan Athorp (2nd Alt.)

HAVEN FIRE DEPT. FIRE CHIEF

Thad Athorp - 565-3082
havenfd@wi.rr.com

Join your neighbors and friends at the Town of Mosel Annual Meeting April 10, 2012 at 7:30 p.m. Mosel Town Hall

- ⇒ Get an update on your Board's actions over the past year
- ⇒ Provide suggestions and input to the Board
- ⇒ Review some of the upcoming road construction plans
- ⇒ Find out what is happening with the Haven Fire Department

Refreshments will be provided by
Cleveland State Bank

**We look forward to seeing you and
talking with you!**

DON'T FORGET TO VOTE APRIL 3, 2012

CLERK-TREASURER OFFICE HOURS

Monday, Wednesday & Friday – 9:00 a.m. to 3:00 p.m.
Hours are subject to change.

Please call the Town Hall at 565-3700 to verify hours. Hours are also posted on the Town Hall door.

WHAT'S INSIDE THIS ISSUE

I-43 –Rowe Road Ramp	Page 2
Board Activities.....	Page 3
Haven Fire Department.....	Page 4
Open Book & Board of Review Date Set.....	Page 4
Remember to Recycle.....	Page 5
Neighborhood Crime Watch	Page 6
Dog Licensing due April 1, 2012	Page 7

REMEMBER TO VOTE

The 2012 February Primary was the first time voters had to show photo ID and sign the poll book. The Town of Mosel had 112 voters. As voter turnout increases, it may take a few minutes longer to vote in future elections. Please be patient as the poll workers perform the required duties as set by the state. The Spring Election is April 3, 2012, the Primary Election is August 14, 2012 and the General

Election is November 6, 2012. If you are unable to come to the polls on election day, you can vote absentee. Please call the Clerk-Treasurer at 565-3700 for more information. The Absentee Application is also available on the Town's website townofmosel.com.



RECOGNITION OF LONGTERM EMPLOYEES

Warren Wunsch has retired after 10 years on the Planning & Zoning Commission. After 13 years, Mary Ellen Schnelle has retired as an Election Inspector. Lynn Pagel has resigned from her Transfer Station Attendant duties after 12 years. We would like to thank Warren, Mary Ellen and Lynn for their many years of service to the Town.

I-43 – ROWE ROAD RAMP TO BE CONSTRUCTED THIS SUMMER



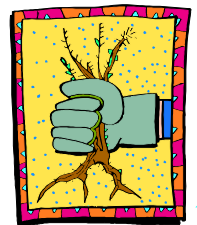
Construction of the special events exit ramp on I-43 and Rowe Road will take place this summer, beginning in mid to late July, 2012. It is anticipated that construction will take 4 to 6 weeks.

The Wisconsin Department of Transportation (WDOT) agreed that all heavy truck traffic

will stay off Town of Mosel roads, with the exception of the small section of Rowe Road that passes over I-43. This will diminish any disruption of Mosel residents' lives and will prevent damage to town roads. After completion of the ramp, WDOT will resurface the small portion of Rowe Road which it used.

MOSEL RESIDENTS MUST REMOVE NOXIOUS WEEDS

Wisconsin state statute 66.0407 (c) requires that "a person owning, occupying, or controlling land shall destroy all noxious weeds on the land." The state specifically identifies noxious weeds a Canada thistle, leafy spurge and field bindweed.



Canada thistle is a particular concern in the Town of Mosel. This pervasive weed spreads into nearby alfalfa, wheat or oat fields, seriously degrading the quality of the crop.

We are asking all Mosel residents to respect the property rights of their neighbors and destroy any Canada thistle on their property before it goes to seed. Our goal is to significantly reduce the amount of Canada thistle in our township.

The Town of Mosel ordinance 5.04 (b) 6 defines noxious weeds as a public health nuisance. Individuals who do not control the noxious weeds on their property are subject to fines as determined by our ordinances.



MOSEL BOARD ACTIVITIES BY DIRK ZYLMAN, CHAIR

About a year ago, when I was out meeting Mosel residents during the election, a Town resident asked me “What actually does the Town Board do?” I thought that was a pretty good question, and would like to spend a little time updating you on the activities of your Town Board over the past 6 months since our last Town newsletter.

Taxes. The Board spent quite a bit of time finalizing the 2012 Town of Mosel budget. We left the 2012 tax levy unchanged. Over the last 3 years, Mosel’s overall tax levy has not gone up. The Town ended 2011 with a surplus, which was used to assist the financing of the Haven Fire Department equipment van.

Town Roads. Our Town’s largest annual expenditure is repairing and maintaining our 25.84 miles of Town roads. This is an increasing challenge, as the materials costs for repairing our roads is increasing much faster than inflation. For 2012, we budgeted \$100,000 for maintenance, snow removal, and grass cutting.

The Town Board is focused on maintaining our roads to extend their lives as much as possible. Your Town Board members attended several seminars on road maintenance and have developed some new approaches for working with contractors or other entities if our roads are going to be used extensively by heavy road equipment.

We also are closely watching Dairyland Drive and have allocated additional dollars to do frequent repairing of any potholes that develop. Last year, in an advisory referendum, Town residents voted 161 to 155

in favor of borrowing up to \$400,000 to replace 3 miles of Dairyland Drive. Because Town residents are almost evenly split, the Board decided to defer this borrowing, at least for the time being.

Tax Collection. Last year, Sheboygan County informed Town officials that they were no longer willing to collect the first installment of property taxes. We needed to develop an alternate approach. The process was ably led by Clerk-Treasurer Rachel Rehbein. We developed a formal agreement with Cleveland State Bank and bought some software. This first installment of tax collection is completed and Clerk-Treasurer Rehbein reports that things went quite smoothly.

Haven Fire Department. Every Town resident should be grateful to the dedicated volunteers of our Haven Fire Department. The HFD leadership came to the Board and made a compelling case that the department’s equipment van needed to be replaced. We worked closely with them in providing the bulk of the funding for this purchase.

Town Ordinances. The Board periodically reviews the Town ordinances to make sure they are up to date and continue to address the needs of our Town. Over the past few months, we have worked on clarifying when building permits are required and also on updating the ordinance relating to transfer station activities

Always feel free to contact any Board member if you have any questions or concerns.

GREETINGS FROM THE HAVEN FIRE DEPARTMENT



The Department had a good year in 2011 serving and protecting the Town of Mosel. There were 23 training sessions in 2011 with an average of 18 firefighters participating at each. This resulted in an accumulated 800 hours of training. We responded to 19 emergency calls in 2011.

In November we purchased a used rescue/equipment truck to replace our old truck that had safety and mechanical issues. Thank you to the Town Board for helping to make this happen. Because this new truck is bigger than the old one, we had to make some modifications to the cistern under the station so that we could park a truck on it. We accomplished this by placing a row of cement columns in the cistern to support the weight of the truck. The firefighters gave 148 hours of their time to complete this project. The following individuals and businesses donated time and equip-

ment for this project: Russ Albert of Albert's Hydrovac cleaned the cistern, Sixel & Schwinn and C.F. Heckmann allowed us the use of their cement drills and Hartlaub Equipment let us use their cement vibrator. Jim Boerner of Quality Concrete and Construction gave us advice during construction and put a professional finish on the concrete. Taylor Ready-Mix donated all of the concrete, steel rod and cement forms for the project, saving the Fire Department many thousands of dollars. A big thank you goes out to all those who donated time and materials to this project.

The Department meets every first and third Monday of the month at 7:30 p.m. Feel free to stop by and see what we do and the equipment we have, whether you are interested in joining or are just curious to see your Fire Department. You can also call me directly at 980-1155.

Thad Athorp, Chief

OPEN BOOK AND BOARD OF REVIEW DATES SET

If you have questions about the assessment of your Town of Mosel property, representatives of the Town's appraiser, Associated Appraisal, will be available at the Town Hall on **April 18, 2012 from 4:00-6:00 p.m. for Open Book**. Part of the purpose of an "open book" is to allow you to examine other parcels and homes in the Town that you think are equivalent to your property.



If after discussions with the appraiser you still believe your property was improperly assessed, you can set up an appointment with the **Board of Review** which is scheduled to meet **May 30, 2012 from 5:00-7:00 p.m.**

ATTEND A TOWN GOVERNMENT MEETING!

Meetings are held at the Mosel Town Hall, W982 County Road FF, and are scheduled as follows:

- ★ **Town Board**– 6:30 p.m. on the second Tuesday of each month.
- ★ **Planning & Zoning Commission**– 7:00 p.m. on the first Tuesday of the month as needed.
- ★ **Board of Appeals** – As needed.

Check the website and posting places for any changes or for additional meetings that may be scheduled throughout the month.

REMEMBER TO RECYCLE

In 2011 Veolia reported that 31.49 tons of recycling was collected in the Town. This is a substantial decrease from 39.11 tons in 2010. If recycling tonnage continues to decrease, the Town's Recycling Grant may also decrease forcing the Town to increase taxes to pay for the operation of the Transfer Station. For the Single Stream Recycling Program, put **ALL** your recyclable items together in the **BLUE** recycling bag. *All of your glass, plastic bottles, aluminum cans, tin cans, papers, junk mail and small broken down cardboard can be mixed together in a single blue recycling bag.* Newspapers and magazines do not need to be bundled and tied. You may place them in the blue recycling bag along with all your other recyclable items. Larger cardboard boxes should still be broken down and placed in the recycling container. All trash must still be kept separate and placed in a **CLEAR** bag in the trash container. Do not mix trash and recycling items together in the same bag.

The following items MAY be placed in the BLUE bag for recycling: Aluminum cans, trays & foil, steel & tin cans (food cans ONLY), glass bottles & jars—clear, green & brown, newspapers (including inserts), magazines, catalogs and phone books, #1-#7 plastics, junk mail & envelopes (including windowed envelopes), shredded paper, brown paper bags, cardboard (broken down-no waxed cardboard), office paper, computer



paper, notebook paper, chipboard (cereal, cake & food mix boxes - any plastic liners removed), carrier stock (soda & beer carrying cases), and paperback books (hard cover with front and backs removed)

The following items MAY NOT be placed in the BLUE bag. Place in CLEAR trash bag: plastic bags & aluminum foil, plastic toys & flower pots, household trash/garbage, polystyrene, Styrofoam, window or auto glass, insecticide, herbicide or hazardous chemical containers, light bulbs, frozen food boxes, pizza boxes or carryout wrappers, dairy carton boxes, holiday wrapping paper, contaminated paper, ceramics, drinking glasses, tissue products/paper toweling, and plastic film (plastic sheets, tarps or wrap).

While the Town does not prohibit the use of burn barrels, according to DNR regulations, it is illegal to burn recyclables. Burning recyclables, garbage, rubber, and painted or treated wood release toxic pollutants into the air and are recognized as a significant health risk and public nuisance.

The Transfer Station is open the **first Saturday** of the month from **9:00 a.m. to 3:30 p.m.** and the **third Saturday** of the month from **9:00 a.m. to 2:00 p.m.** The Transfer Station is located on Rowe Road between Dairyland Drive and County Road LS (east of the railroad tracks).

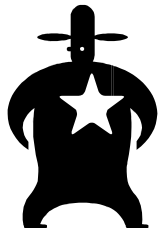
MOSEL SHIPWRECK NAMED TO NATIONAL REGISTER OF HISTORIC PLACES

Mosel gained some fame recently when the Walter B. Allen, a Great Lakes grain hauler that sank east of the Town of Mosel on April 11, 1880, was placed on the National Register of Historic Places. The ship, carrying 19,000 bushels of grain, sank off the coast of Mosel in about 170 feet of water. According to experts, it is remarkably well preserved.



MOSEL RESIDENTS CREATE NEIGHBORHOOD CRIME WATCH

Approximately 45 Mosel residents in the Garton Road - County LS area have formed a Neighborhood Crime Watch. The neighbors all agreed to keep an eye on their neighbors' properties when the neighbors were not present and to report any suspicious activities to law enforcement.



Louis Milsted led the effort to create the Neighborhood Crime Watch. The group also worked with the Sheboygan County Sheriff's Department, who assigned Deputy Ethan Weber as the liaison officer.

The Neighborhood Watch group will be erecting signs informing passersby about the cooperative effort, and every household was provided with decals to place in their windows or doors.

This is a great example of neighbors working together to make our neighborhoods safer. Each household contributed \$15.00 to pay for the signs and decals. Louis Milsted is to be especially commended for the great amount of time he dedicated to make sure the Neighborhood Crime Watch became a reality.

WHEN DO I NEED A BUILDING PERMIT?

Anything that is an improvement to your property requires a Building Permit. If the cost will be less than \$1,000 a permit is not required. This would include new buildings, additions, plumbing, electrical, heating, ventilation installations or re-placements, fencing, paving, concrete work, driveways (except gravel), siding, roofing, new windows, interior re-modeling, construction around a culvert, pool, etc.

The permit is only good for what is stated on the application. Permits are good for one year. A permit is also required for razing or demolition.



Building Permit Applications can be obtained from the Clerk-Treasurer's office or on the website.

POSTING LOCATIONS



Information and legal notices are posted at the following locations:

- ★ **Mosel Town Hall** - W982 County Road FF
- ★ **Joe's Hometown Auto** – N7451 Werthmann Lane (off State Highway 42)
- ★ **The Transfer Station** on Rowe Road

Those matters that require publication are printed in *The Plymouth Review*. Anything that is required to be published will also be posted at all three posting locations.

BOOKMOBILE STOPS IN HAVEN

Bookmobile will be stopping at the Town Hall from 3:45-4:30 p.m. on March 21, April 4, April 18, May 2, May 16 & May 30. You can request books via the internet at www.easicat.net. Call 208-4900, ext. 15 for more information.



2012 DOG LICENSING INFORMATION

If you own or keep a dog in the Town of Mosel over 5 months old, you must obtain a license (per State Statute 174.05).

Neutered/Spayed dogs are **\$6**
Unneutered/Unspayed dogs are **\$13**
The cost for a kennel license is **\$60**

****A late fee of \$10 PER DOG will be charged after April 1, 2012****

An application for a Dog License is below and on the website.



To obtain a license, please return the application, copy of the rabies certificate (not the payment receipt), appropriate fee (payable to Town of Mosel), and a self-addressed stamped envelope to the Town of Mosel, W982 County Road FF, Sheboygan, WI 53083. You may also request a dog license in person during office hours or place in drop box.

All licenses expire December 31, 2012 regardless of when they were issued during the year.

You can obtain the Dog License form under permits on the website.

**Town of Mosel
W982 County Road FF
Sheboygan, WI 53083**